

PURPOSE:

Apollo Mono is a natural ventilator providing automatic smoke ventilation and day-to-day ventilation. Natural daylight can enter through its flap. It has been tested to EN 12101-2 and is CE marked.

APPLICATIONS:

Apollo Mono is suitable for use in commercial, industrial and municipal premises.

FEATURES AND BENEFITS:

Apollo Mono provides high-volume smoke ventilation in the case of a fire. In particular it has an excellent U value and low weight. Great performance comes at an attractive price. The ventilator can optionally be insulated or with wind deflectors (which can achieve better aerodynamic values).

When closed, the Apollo Mono is fall-through proof. It is available in all RAL colours. Its low installation costs add to its many features and benefits.

Its technical details are described overleaf.

KEY FEATURES**Permanently fall-through proof**

Tested to GS-Bau-I8 when closed

Tested and certified to

DIN EN 12101-2

Can be ordered in mm increments**Extensive number of variants**

As the result of the many different sizes and flap types as well as motor and cylinder versions

Reduce costs for day-to-day ventilation by using a

230 V actuator

Acoustic performance

up to 29 dB (aluminium version)

Cv value up to 0.74

(with baffle)

Durability

All components manufactured from durable aluminium

Resistance to hail Class HW5**Maintenance**

possible from the exterior

Optimised U value

Up to 1.31 W/m²K (in the appropriate version)

Low initial and running costs means that it has great performance at an attractive price

THE HIGH-QUALITY ALTERNATIVE TO ANY SKYDOME

Apollo Mono is a natural ventilator providing automatic smoke ventilation and day-to-day ventilation. Since it's mostly made from aluminium, it enjoys greater durability than a standard skydome. It's available in various sizes. It has a certificate in accordance with the European Construction Products Directive 89/106/EC and fulfils the requirements of DIN EN 12101-2 as a smoke ventilator. Apollo Mono uses the natural buoyancy of warm air for day-to-day ventilation and smoke control ventilation. A thermal ventilation valve automatically opens the vent at a pre-defined temperature if there is a fire. Alternatively, the vent may be opened automatically by a central fire control panel.

In addition, the unit may be opened by a pneumatic cylinder (minimum 6 bar) or electric actuator (230V AC) controlled by a central control panel for day-to-day ventilation. Where necessary it is possible to fit the control system with a wind and rain sensor to close the ventilator to prevent the entry of rain water. Apollo Mono is very well insulated and the U-values of the unit fulfil the requirement of the requirement of energy performance of all European countries.

When closed, the Apollo Mono is fall-through proof. In order to prevent falls when it's open, the ventilator can optionally be equipped with a special Colt "SiteGuard" safety guard. SiteGuard has no negative influence on the aerodynamic performance of the Apollo Mono.

UPSTAND TYPES

- Galvanised steel
- Height of upstand: 400 or 500mm
- Standard dimensions 800 mm x 800 mm to max. 1800 mm x 2300 mm
- Upstand prepared for mineral wool insulation (up to 80mm)
- Optional powder coating inside
- Optional wind baffles (three sides, 210 mm high)

FLAP

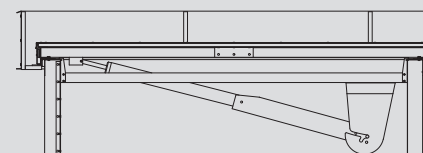
- Aluminium or polycarbonate flap
- Brushes or rubber seals
- U value up to 1.31 W / m²K
- R'w with upstand = max. 29 dB
- Opening angle 165 degrees
- Fall-through proof with 1,200 joules impact resistance (in accordance with GS-Bau-I8 as of 02/2015)

Classification in accordance with EN 12101-2

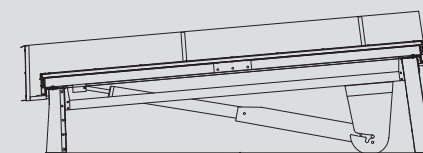
- RE– Reliability RE 1,000 + 10,000 (day-to-day ventilation)
- Snow loads between SL 356 and 2793 N/m²
- Wind suction loads between 1500 N/m² and 7140 N/m²

CONTROLS

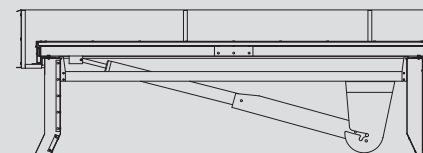
- Pneumatic cylinder
- Electric actuator: 24 V, 48 V and 230 V

UPSTAND OPTIONS

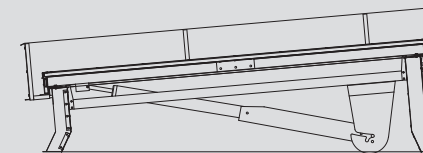
Straight base with horizontal flap



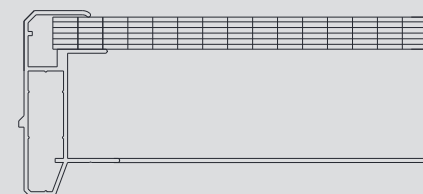
Straight base with inclined flap



Conical base with horizontal flap

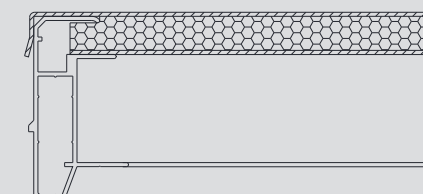


Conical base with inclined flap

FLAP VARIANTS

P20 – polycarbonate multi-skin sheet

- Thickness: 20 mm
- Colour: clear / opaque / non-translucent grey
- Sheet: comprising 7 skins and 6 chambers
- As standard, UV-resistant on one side (UV-resistant on both sides as an option)
- Brushes or rubber seals
- R'w with upstand = 24 dB
- Hail resistance (Class HW5)

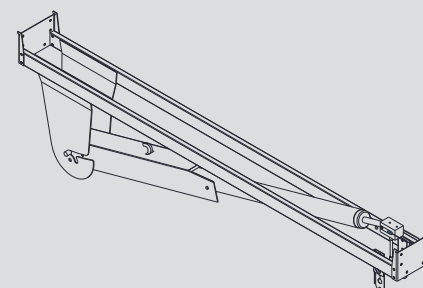


A2– aluminium flap

- Thickness: 24 mm
- Outer sheet 1.5 mm thick aluminium
- Insulated internal mineral wool
- Inner sheet 1.5 mm thick aluminium
- Brushes or rubber seals
- R'w with upstand and seals = 29 dB

CONTROLS OPTIONS

Pneumatic cylinder



Electric actuator

